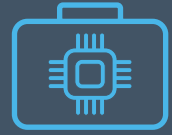


By the Numbers

57 Percent of professional occupations in the 2019 U.S. workforce held by women⁴

26 Percent of professional computing occupations in the 2019 U.S. workforce held by women⁴

18 Percent of Chief Information Officer (CIO) positions in Top 1000 Companies held by women in 2019¹



4 million

Number of U.S. computing-related job openings expected by 2028⁵



18 Percent of these jobs that could be filled by U.S. computing bachelor's degree recipients by 2028⁵

56 Percent of Advanced Placement (AP) test-takers in 2019 who were girls²

47 Percent of AP Calculus test-takers in 2019 who were girls²

29 Percent of AP Computer Science test-takers in 2019 who were girls²



50 Percent of 2019 International Science and Engineering Fair (ISEF) finalists who were girls⁶

42 Percent of 2019 ISEF finalists in Engineering who were girls⁶

28 Percent of 2019 ISEF finalists in Computing categories who were girls⁶



57 Percent of 2019 bachelor's degree recipients who were women⁷

21 Percent of 2019 Computer and Information Sciences bachelor's degree recipients who were women⁷

21 Percent of 2019 Computer Science bachelor's degree recipients at PhD-granting universities who were women³

37 Percent of 1985 Computer Science bachelor's degree recipients who were women⁷



26 Percent of computing workforce who were women in 2019⁴

3 Percent of computing workforce who were African-American women in 2019⁴

7 Percent of computing workforce who were Asian women in 2019⁴

2 Percent of computing workforce who were Hispanic women in 2019⁴



SOURCES:

¹Korn Ferry, 2019. "Analysis of Largest U.S. Companies Shows percentage of Women in C-Suite Roles Inches Up from Previous Year"

²College Board AP Program Summary Report, 2019 (Calculus AB & BC, Computer Science A, Computer Science Principles)

³CRA Taulbee Survey, 2019

⁴Department of Labor Bureau of Labor Statistics, Employed and Experienced Unemployed Persons by Detailed Occupation, Sex, Race, and Hispanic or Latino Ethnicity, 2019 (unpublished table from Current Population Survey 2019)

⁵Department of Labor Statistics, Employment Projections (Occupational Category: 15-1100) Includes new and replacement jobs and assumes current undergraduate degree (CIP 11) production levels persist

⁶International Science and Engineering Fair (ISEF) finalist breakdown by gender, 2019 (unpublished)

⁷Integrated Postsecondary Education System (IPEDS) at National Center for Education Statistics (NCES), 2019 (CIP 11)

